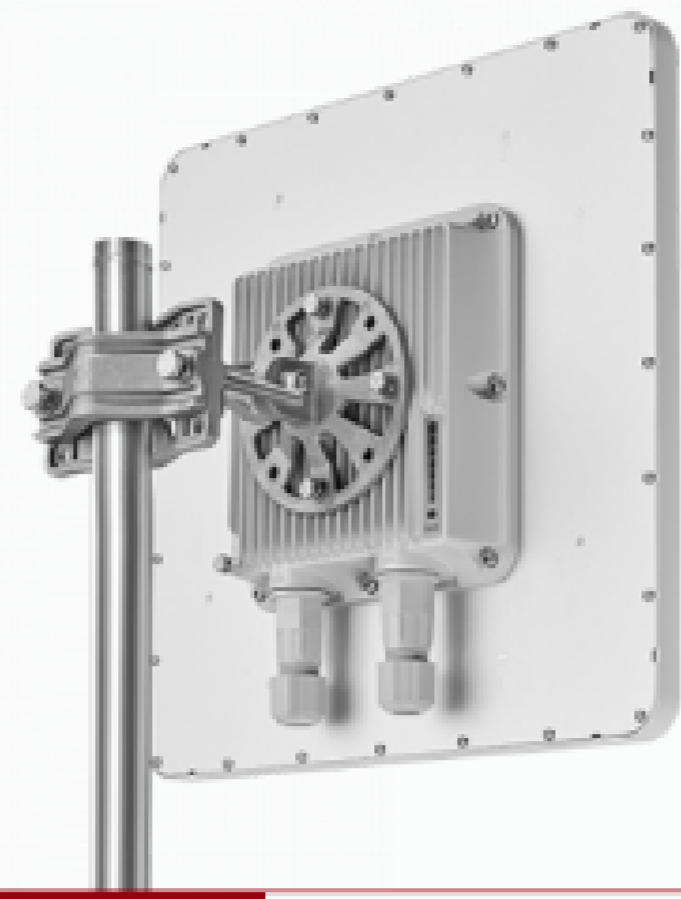


EC SYSTEM

EC-LINK SQ6-25



EQUIPMENT DATASHEET

DESCRIPTION

EC-LINK SQ6-25, 6 GHz point-to-point unit, net throughput up to 650 Mbps, integrated dual-pol antenna, 25 dBi, 8x8 deg

Net Throughput

Up to 650 Mbps

Distance

Up to 60 km

Radio Tech.

MIMO 2x2 (SC-FDE)

Modulation Coding Scheme

From QPSK 1/4 to QAM256 7/8

Transmit Power

Up to 27 dBm

Receiver Sensitivity

Down to -101 dBm

Frequency Range

6000-6425 MHz

Channel Width

3.5, 5, 7, 10, 14, 15, 20, 28, 30, 40, 50, 56 MHz

Center Freq. Adjustment Step

1 MHz

Dublex Scheme

TDD

Antenna

25 dBi

Wired Interfaces

1x Combo port GigabitEthernet/SFP

Consumption

Up to 15 W

Power options

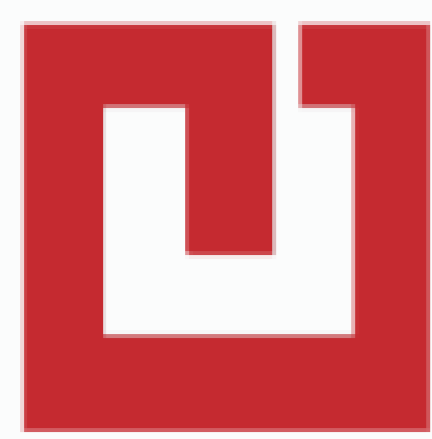
90-240 VAC ~ @ 50/60 Hz, $\pm 43..56$ VDC

Outdoor Unit

350 x 350 x 71.5 mm, 2.3 kg

Packing List

- Outdoor unit Q6-25 - 1 pcs.
- Power Supply IDU-CPE-G(24W) - 1 pcs.
- Power Cord - 1 pcs.
- Cable Gland V1 - 1 pcs.
- Cable Gland V2 - 1 pcs.
- Standard RJ-45 connector - 1 pcs.
- Shielded RJ-45 connector - 1 pcs.
- RJ-45 Plug Cap - 1 pcs.
- MONT-KIT-85 Mounting kit - 1 pcs.
- Quick Start Guide - 1 pcs.



EC SYSTEM

EC-LINK SQ6-25

EQUIPMENT DATASHEET

FEATURES

RADIO

- ▣ **DFS**
— ETSI/FCC, including radar detection (including off-channel)
- ▣ **Automatic Bitrate Control**
- ▣ **Automatic Transmit Power Control**
- ▣ **Channel Time Adjustment**

NETWORKING

- ▣ **Built-in full-fledged L2 switch supporting**
- ▣ **Transparent L2 transport for Ethernet traffic of any type**

ENVIRONMENTAL

- ▣ **Outdoor Units:**
— Operating temperature range -40..+60 °C, (can be extended to -55..+60 °C, models with "t" index in PN), 100% humidity, condensing
— IP66/IP67 compliant water and dust protection
- ▣ **Indoor Unit: 0..+40 °C, 95% humidity, non-condensing**

SECURITY FEATURES

- ▣ **Storm/flood protection**
- ▣ **Password protection**
- ▣ **Secure command-line access via SSH protocol**

MANAGEMENT FEATURES

- ▣ **Various Management Protocols: HTTP, SSH, HTTPS, Telnet, SNMP v1/2c/3 (MIB-II and proprietary MIBs)**
- ▣ **Graphical User Interface**
- ▣ **LED Indication: power status, wireless and wired link status, signal level**
- ▣ **Antenna alignment tool**
- ▣ **Automatic software update**
- ▣ **Online monitoring**

QUALITY-OF-SERVICE

- ▣ **8 priority queues**
- ▣ **IEEE 802.1p support**
- ▣ **IP DiffServ support**

MAC

- ▣ **VLAN, 802.1ad DVLAN Q-in-Q (pending), 802.1Q (pending)**

STANDARD COMPLIANCE

- ▣ **Safety:**
— EN/IEC 62368-1:2018 (pending), EN/IEC 62311:2019
- ▣ **Radio:**
— ETSI EN 302 217-1/-2 (pending)
- ▣ **EMC:**
— ETSI EN 301 489-1/-4 (pending), FCC Part 15.407 (pending)
- ▣ **RoHS:**
— RoHS3 EN IEC 63000:2018 (pending)



EC SYSTEM

EQUIPMENT DATASHEET

EC-LINK SQ6-25

RADIATION DIAGRAM

